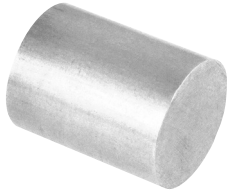




WATER LINE DIVERTING PLUGS

Diverting Plugs are used to redirect waterflow through waterlines drilled in a mold.



Diameter	Length	Catalog Number	Price
5/16	.62	WP312	\$0.68
7/16	.62	WP437	\$0.73
9/16	.75	WP562	\$0.83
11/16	.87	WP687	\$0.94
15/16	1.25	WP937	\$1.35

Prices subject to change without notice